



1902 Campus Place, Ste. 11, Louisville Kentucky USA
502-749-5492 info@waterbywomen.org

Part I ~ Organizational Overview

Mission ~ Empower Water Women as the potable water solution for their children, families and communities.

Vision ~ Healthy water for every member of the human family, especially the children.

Focus ~ Children under age 5 who are most likely to suffer and die from waterborne illness, living in communities without ready access to plentiful healthy water. Children are dying for a drink of clean water.



Leadership ~ Water By Women is governed by a Board of Directors, with executive leadership by Larraine Lauter OSU, assisted in program management and development by 8 US based staff. International leadership and staffing include country leaders, volunteer teams, partners and certified Water Teachers in Honduras (the founding team), Haiti, the Philippines, Uganda, and Zambia. The same structure is replicated in US projects with the Navajo Nation and Appalachian communities. Mission Partners (see more below) also conduct projects in Bolivia, Perú, Nigeria, Tanzania, Kenya, and less frequently in a variety of other countries.



Spiritual Foundation ~

~ People of many different religious backgrounds are involved in Water By Women: Water Women, partners, advocates, donors, staff and governing board. God calls us all together to bring clean water to all God's thirsty children. All in need are welcome and respected, regardless of denomination or faith. All who want to help in accord with principles of mutual respect are welcome.

~ We are Ecumenical ~ Christians of all kinds working together, unaffiliated with any one church, but all inspired by the teaching of Jesus.

~ A Spiritual Foundation for a Human Solution ~ we hold that technology alone cannot solve the problems of humanity. Technology (especially the Sawyer PointONE filter that we distribute) has miraculous potential, but only when directed by the human who is motivated by compassion for others. That's why we ask our Water Women to make their own personal commitment to God, regardless of their particular religious expression. We trust that the Spirit who works through all people of goodwill is the Spirit who encourages, strengthens and guides our Water Women for many years of faithful service to God's thirsty children.

~ Compassion ~ "By acts of compassion, we change the world." That's the subject of conversation and sharing at the start of every Water Women training. Mothers of every faith expression, even those who are not actively religious, understand the power of compassion.



WWB Organizational History, Programs and Achievements ~ 2007 to Present

~ **2007** ~ Three short-term US medical missionaries, attempting to address waterborne illness at their mission site, **installed a water purification unit** in a church in Colonia Fuerzas Unidas, Tegucigalpa, Honduras. The short-lived project (one week) proved a valuable lesson, leading to a wiser **strategic plan to focus on equipping mothers with household point-of-use systems**. **Extensive research led the founders to the Sawyer PointONE filter** as the best product to meet the need.

~ **2008** ~ The group expanded to include **Honduran lay leaders** of Templo Divina Misericordia, working together **to develop a community water solution in the hands of mothers, with a core value of "blessings are for sharing."** The first 10 Water Women were commissioned in **February 2008**.

~ **2008-2011** ~ **447 Water Women commissioned**, in Colonia Fuerzas Unidas and beyond. **Honduran lay leaders began carrying the program to remote rural villages**. Short-term missionaries in Honduras adopted the program for their own mission sites. Surveys of Water Women, along with medical checkups of their children, formed the basis for **program and filter evaluation**.

~ **2011** ~ Recognizing the potential impact for children in other developing countries, a **board of directors formed in the US**. **501c3 status granted in 2012, retroactive to October 2011**.



~ **May 2012** ~ A full-time staff position was established to expand the model beyond Honduras, beginning with church projects in Cambodia, Nepal, India, Panama and South Sudan. Other projects soon grew in multiple other countries. **Strategic planning focused on Mission Partnership** (guidance and training of short-term church missionaries); **Funding relationships** were also cultivated.

~ **2014** ~ **Water With Blessings (later to become Water By Women)**, launched in Haiti under two distinct partnerships: one representing a classic church mission, the other a group of Haitians and Haitian expats. The Water Woman program was **recognized by the PAHO Foundation** with their 2014 Award of Excellence.

~ **November 2017**~ A new **strategic plan to address cholera in Haiti** was launched; Water Women in 25% of households in cholera-threatened communities to provide potable drinking water access for 100% of a community population, with a goal of complete saturation of entire communes. **GIS (Geographic Information Systems) technology** was integrated into all programming.

~ **2018** ~ A “watershed moment”: US Board of Directors discerned a **strategic plan to commit major emphasis and resources to the further development of Country Teams** (nationals serving their own people), beginning with Honduras, Haiti and the Philippines.

~ **2020-2022** ~ **Activity restarted in Haiti and Honduras** within several months of the pandemic start, and continues to this day through the challenges of Covid and civil unrest. Other Country Teams gradually came back into action as well.

~ **2023** ~ ~ At another “watershed moment”, WWB leadership recognizes that **5 years of GIS data collection has demonstrated the long-term eradication of cholera in 18 Haitian communes, as correlated with Haiti Ministry of Health data** for confirmed cholera cases in the current outbreak.

In recognition of the impact of our foundational model; the empowerment of women as a sustainable water solution, the Board of Directors voted to change the name of the organization from Water With Blessings to Water By Women.



~ **2024** ~

~ **Water By Women counts over 200,000 Water Women across 48 countries**, with the greatest numbers in Honduras (44,000+) and Haiti (104,000+). *Updated 6/5/2024*

~ A higher level **Strategic Plan** calls for bringing the model of Water By Women to the world of water solutions, while building capacity for commissioning 100,000 additional Water Women per year by 2035.

~ **Guidestar: Platinum** ~ <https://www.guidestar.org/profile/37-163987>

Part II ~ Program Overview

Core Program Summary

~ **Water Women** are the hallmark of Water By Women. In this innovative program, mothers are empowered for the health of their communities, equipped with long-life filter systems, and in turn commit to filtering potable drinking water for 3 other households along with their own. The principles of **community**, **subsidiarity** and **sustainability** are core values of the Water Woman program. Given the long service life of the filters entrusted to committed women, **the program does not create dependency upon continued funding.**

Rationale ~ Household Filters for Moms ~

It's very common for remote communities in developing countries to struggle with terrible health problems related to unhealthy water, but it's very difficult to build sustainable infrastructure (water treatment plants and home plumbing) in these communities and it's very expensive. Most remote and marginalized communities are many years from healthy water by infrastructure. Many water organizations are working hard to introduce water infrastructure, and we salute them! But in the likely lengthy interim between dreams and implementation, we want to see children saved from disease and death.

A very modest investment for Water Women to saturate a community means immediate relief from waterborne illness. The planning and implementation of infrastructure can still proceed apace. Moms make wonderful Water Women ~ they desperately want their children to survive and thrive, and they tend to care about other people's children too. Those who make a spiritual commitment to serve as Water Women have a strong sense that they are spiritually sustained.

Our Plan and Process ~ Moms and Communities

~ **We empower MOMS as Water Women for a powerful clean water solution ~**

- ~ Moms who filter the drinking water for a total 4 households.
- ~ Moms who care about all children.
- ~ Moms who are available for training and service.
- ~ Moms who make a sacred promise to serve.

~ **We identify communities** where children under age 5 are the most vulnerable.



~ **We move into immediate action** to ensure that every child (families and neighbors too!) is drinking clean water within a few days of our arrival.

~ **We Organize**

- ~ The goal: Saturate the community with Water Women.
- ~ Collaborative planning and implementation with local leadership
- ~ A plan to move neighborhood by neighborhood, village by village.

~ **We Commission willing moms as Water Women**

- ~ Every mom gets her own Sawyer PointONE filter.
- ~ All training normally conducted by certified Water By Women trainers.
- ~ Every Water Woman registered for GIS data and mapping.



~ **Water Women activate the blessing of healthy water**

- All the children are drinking healthy water
- ~ along with their families and neighbors.

~ **We conduct follow-up surveys of large-scale projects** to determine program sustainability and impact. (See more below.)



Data-backed Accountability

~ All new **Water Women** are registered at the conclusion of their training day via GIS cellular-based technology. Collected data includes name, photo (with permission), home community, household size, number of infants (age 0-4) and children (5-18), along with a barcode affixed to their water filter. If the group is to be surveyed for follow-up data, Water Women are queried as to the presence of health-related symptoms within the past two weeks in their households. GPS coordinates and a date/time verification are automatically recorded.

~ **Water Women** appear in our online, live GIS maps, according to their location on their training day, within a 5-meter degree of accuracy.

~ Any donor or funder may log in at our website map with their donor ID, and the map will populate with the Water Women they have sponsored.

Assessment and Evaluation

We partner with community leadership (health providers, civic and religious leadership) to assess evidence of

- ~ High level of waterborne disease
 - ~ High percentage of households below poverty level
 - ~ Nutritional challenges
 - ~ Lack of water solution projects
 - ~ Difficulty in accessing health care
- ~ Data collected at registration is immediately applicable in determining useful information such as current health challenges, average household size, number of infants/children per household, and the like.
- ~ Project assessment: the names of home communities are useful for corroborating the even saturation of Water Women in a particular area, since it is not



feasible to conduct trainings in every small village. Trainings are held at central locations, to implement a careful plan with the intention of an even saturation across each targeted area.

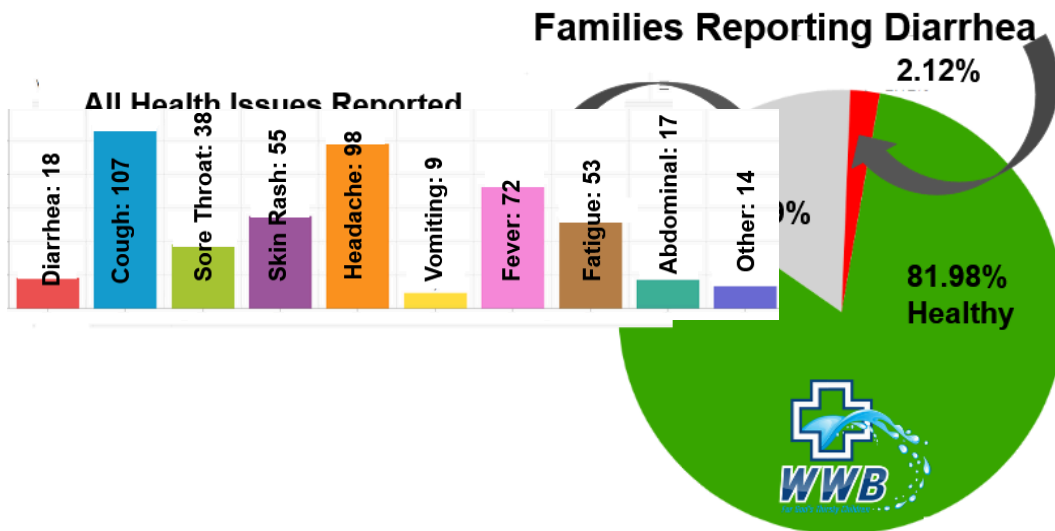


~ Follow up surveys may be conducted as funded for a particular project. In general, 10% of a large project (1000+ Water Women) will be surveyed at periods ranging from two weeks to a year. Water Women are again queried as to the presence of health-related symptoms within the past two weeks in their households. They are also asked to demonstrate correct use and maintenance of the filter system, and the system is checked for damage. Finally, they are asked to share their Water Woman experience of filtering water for their neighbors.

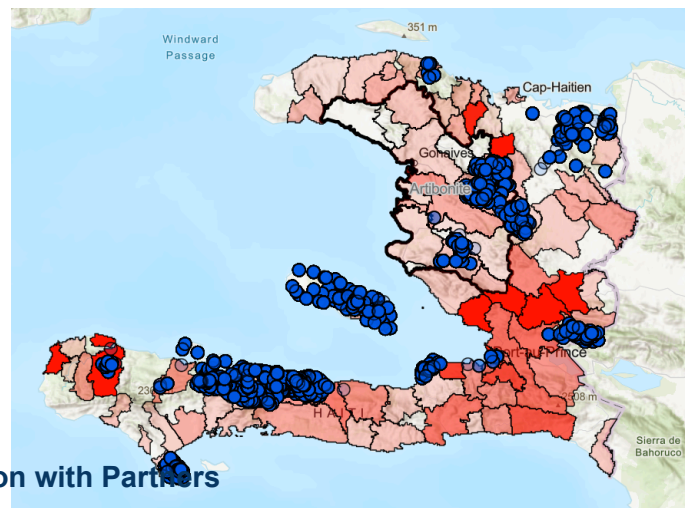
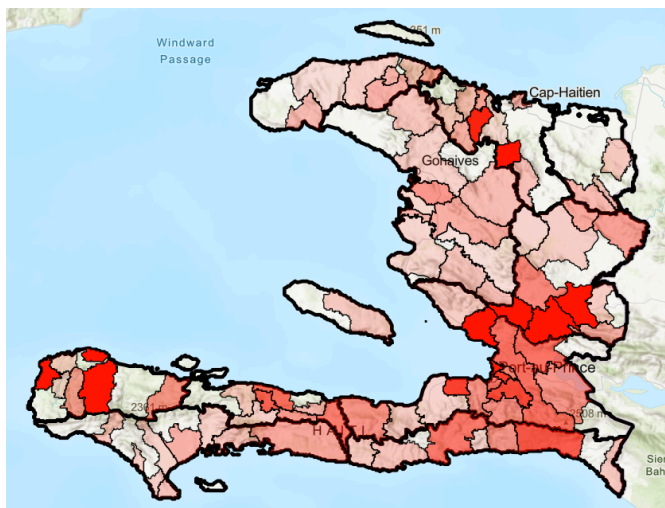
Impact

~ Follow-up survey data consistently demonstrates a precipitous drop in the rate of diarrhea in children under age 5, as well as the marked diminishment of other symptoms of waterborne illness. These charts, reporting data from a survey of 500 Water Women in the north coast of Honduras, interviewed between 3-14 months after their training and registration, illustrate typical outcomes.

~



Statistics for the 2022-2023 cholera outbreak as reported by the Haiti Ministry of Health demonstrate a remarkable correlation between WWB program saturation and very low numbers of confirmed cases. Live map access available upon request.



~ **Funding Partners** want to bring the blessing of healthy water to those in need, often in a specific country or community, but they need competent, experienced partners to implement a successful program. Benefits include well-developed proposals, cost-efficient budgets, a proven track record for a proven program, professional GIS data collection and mapping, a project dashboard, follow up surveys...plus special reports and Water Woman match to pass along to your donors. Funding Partners are welcome to observe and monitor in the field. We've worked on behalf of some major players who want to expand their impact without building entire new programs from scratch...and their donors are very happy.

~ **Mission Partners** actually join us in the field in some form of collaboration. They might fully implement a small-scale project at a new mission site, or work in partnership with one of our country teams. Training and GIS data collection are required, as well as a

covenant commitment in which they confirm they will implement the program completely and faithfully. Benefits include solid guidance, full data reports, mapping and dashboards, an out-of-the-box project and the satisfaction of life-changing, life-saving impact for children and their communities. No need to reinvent the water wheel: we've got a great program that hundreds of partners have carried out with great success. Contact info@waterbywomen.org to request a consultation with our Director of Partnerships.



Note: Program costs for Field Partners (Mission Partners who actually implement the program at their mission site) are negotiable, based on field expenses which they can assume.



Finances

The base calculation for a **Water Woman Project** starts with our 2024 average cost of \$75 US per Water Woman. Follow up surveys add, on average, about \$5 more per surveyed person.

The volunteer Water Woman receives

- ~ a Sawyer PointONE Filter
- ~ a bucket to which the filter is attached
- ~ a clean water storage pouch
- ~ a WASH-practices book to share with and teach her children
- ~ handmade protective cover and lanyard
- ~ the promise of healthy clean water for her family and neighbors ~ priceless!

Also covered

- ~ Training expenses for WWB certified Water Teachers
- ~ Team guidance and supervision
- ~ GIS (Geographic Information Systems) registration data

The Funding or Mission Partner receives

- ~ Reports as required by the funder, exact to expected protocol
- ~ GIS dashboard with online map, registration data and follow-up data (if funded)
- ~ Data in spreadsheet format
- ~ Narrative analysis and video conference reporting, as requested (no extra charge)
- ~ Optional: Prayer Card: photo, first name and family data for each Water Woman, to be shared with individual donors

Current Organizational Budget

2024 Budget Summary			Account	Subtotals	Total	2024 per WW
		Projected carryover from 2023	\$200,000.00			
INCOME						
	99 · INCOME					
		100 · Mission Partner Sponsorship	\$30,000.00			
		200 · Other Donor Sponsorship	\$1,000,000.00			
	Total 99 · Donation INCOME			\$1,030,000.00		
	Total 400 GRANT INCOME			\$300,000.00		
	700 In-Kind Donations			\$70,000.00		
Total All Income 2024					\$1,400,000.00	
		Plus Obligation brought forward			\$1,600,000.00	
		Water Woman Commitment IF			20,000.00	
EXPENSE						
	Core Program (filters, hardware, shipping, training materials)			\$777,900.00		\$38.80
	2000 · MISSION DEVELOPMENT			\$40,350.00		\$2.02
	3000 · Special Projects			\$15,000.00		
	Total 4000 · COUNTRY TEAMS ~ Training Expenses			\$294,500.00		\$14.73
	5000 · Events/ FUNDRAISING CAMPAIGNS			\$20,000.00		\$1.00
	6000 · ADMINISTRATION/TECHNOLOGY			\$36,545.00		\$1.83
	7000 · EMPLOYEE & STAFFING (US)			\$300,000.00		\$15.00
	8000 PROGRAM/GIS MANAGEMENT			\$12,000.00		\$0.60
Total Expense					\$1,496,295.00	
Net, per carryover					\$103,705.00	
Total Cash Expense per Water Woman						\$74.81

Common Questions



Why Point Of Use?

~ As Water BY Women, we've put our focus on Point-Of-Use (POU) filtration as the best answer to our focus on children under age 5 who are most likely to suffer and die from waterborne illness.

~ We know by experience how to create successful, sustainable POU projects.

~ We are happy to share why we see POU as an immediate solution to the immediate need of waterborne illness.

~ A community of 400 households needs only 100 Water Women, at a cost of \$7500, a short period of community preparation, and one or two days of Water Woman training. At scale, the immediate impact is remarkable. Please feel free to contact us to learn more.

Why the Sawyer PointONE?

~ In 2007, having been taught by failure, we began our quest for a point-of-use solution that would be both reliable and practical for mothers in developing countries. We conducted extensive research into the entire range of such solutions. When we learned about hollow-fiber membrane filtration, as developed for the Sawyer PointONE filter, we knew we had been led to a remarkable tool:

~ Powered by gravity ~ no electricity needed.

~ Exceeds EPA standards for potable water ~ 99.99999% removal of biocontaminants.

~ Exceptional quality ~ .1 micron absolute (every pore size = .1 micron), extra thick membrane

~ Exceptionally high production standards ~ rigorous mechanical testing at three points in the production process.

~ Long life ~ potentially a lifetime of use; rugged construction, durable materials.

~ Easy maintenance ~ a simple, daily backflush operation.

~ Generous output ~ with faithful maintenance, the filter will yield a true POU flow rate.



Our Field Experience

- ~ 160,000 recipients, no complaints to date.
- ~ Water Women with filters that have lasted as long as 15 years to date.
- ~ Follow up studies demonstrate a radical reduction of diarrhea and other symptoms related to waterborne diseases.
- ~ Large-scale “saturation” projects correlate with independently verified reduction of waterborne disease, most notably cholera.

And Yet ~

~ “Sin la madre conectada, el filtro no vale nada.” That little saying from our Honduran team illustrates the most essential aspect of successful POU/Sawyer PointONE projects: “Without a mother connected, the filter is worthless.” We could broaden that to agree that other distribution methods can lead to success, so long as some human person is “connected” to the filter. Yet we contend, with evidence, that nothing exceeds the impact of a dedicated mom with a sense of spiritual commitment who understands her Sawyer PointONE filter as a wonderful blessing for her children and her neighbors. A Water Woman continues to care for and share her filter ~ she’s the true blessing..